

# HANSON OFFROAD

12539 Jomani Drive Bakersfield, CA 93312  
P:877.757.9779 [sales@hansonoffroad.com](mailto:sales@hansonoffroad.com)

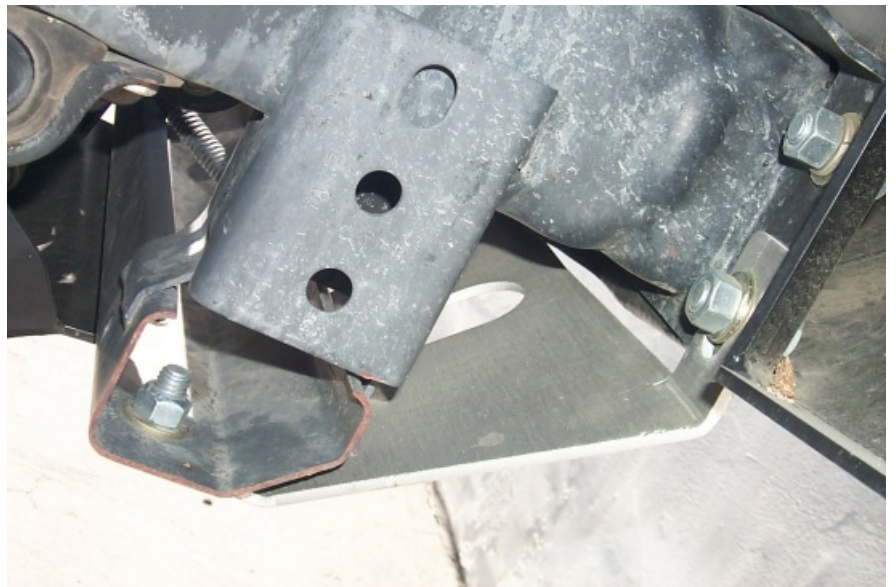
## JKFSP-A / JKFSP-P FRONT SKID PLATE INSTALLATION

These instructions cover the installation of the Aluminum (JKFSP-A) and Steel (JKFSP-P) front skid plate for the Jeep JK.  
Minor clearancing required for 2012 and up models (page 2)



Driver Side View: Skid mounts to the outside lower bumper bolt on the top. The skid mounts to the outside hole on the stock under-rider bar as shown.

Passenger Side View: Skid mounts to the outside lower bumper bolt. The lower portion of the skid mounts to the outside hole on the stock under-rider bar.



All 2012 and later model Jeep JK's will require minor trimming of the factory gusset found on the lower under-rider bar. Photos below show where to mark and trim for skidplate clearance.

