

HANSON OFFROAD

12539 Jomani Drive Bakersfield, CA 93312
P:877.757.9779 sales@hansonoffroad.com

JXJ4002-P / JXJRTC-P: JEEP CHEROKEE (XJ) REAR BUMPER & TIRE CARRIER INSTALLATION



SHOWN WITH STOCK HARDWARE (WILL NEED TO BE RETAINED FROM THE VEHICLE)



1. Remove the stock rear bumper from the vehicle and retain all hardware for re-installation. Included are 6 brackets (3 pairs). The above left photo shows the basic set-up of the brackets in relation to one another. Once you have installed the bracket assembly on the passenger side as shown, the same will need to happen with the mirror brackets on the driver side as well.

2. Locate the long tab nut plate and install into the opening from the rear of the vehicle as shown in the photo. When properly installed it will appear with the outside nut facing the middle of the vehicle.

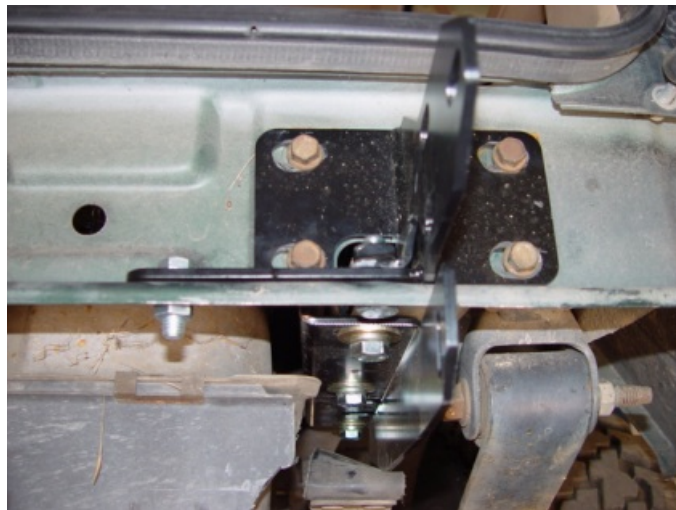
3. The large mount bracket can be put into place with the side support tab facing the middle of the vehicle as shown in the photo.



4. Align the bracket in relation to the Hanson rear bumper. The bracket should be 13.5" from the end of the bumper. Align bracket accordingly from the side of the body. All hardware should remain loose for proper bumper alignment at this time.



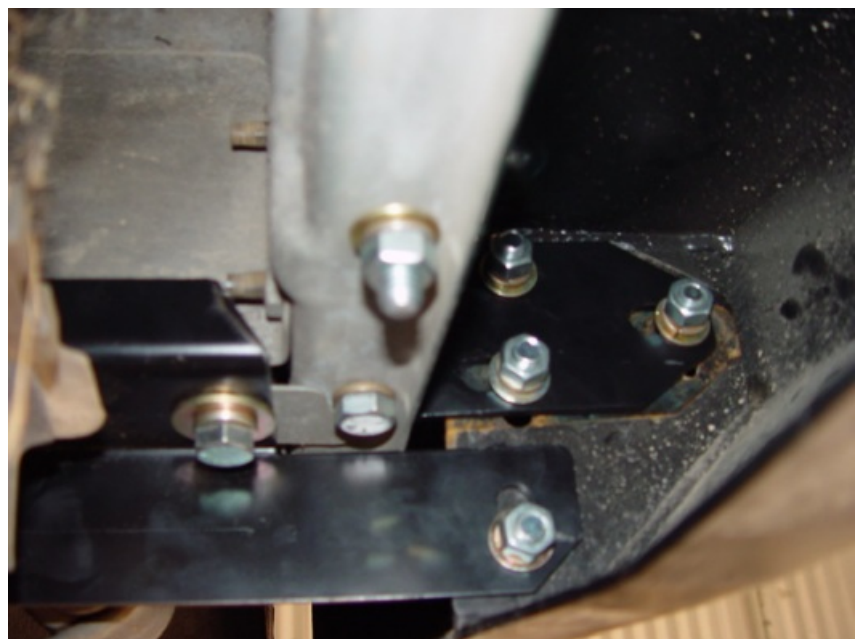
5. Place the lower support bracket in place as shown in the below photo. Mount bracket to the tab nut plate and the outer bracket.



6. With brackets mounted to the vehicle, and with the help of a friend, place bumper on the brackets.



7. With the bumper roughly in place, roll the bumper up the vehicle to properly align the mounting holes on the bumper with the brackets. Secure all hardware on bumper and brackets once bumper is properly in place.



8. Finished bumper and brackets installed with all hardware.